

HOLTEC PROPRIETARY

D

C

B

A

HOLTEC PROPRIETARY

8

7

6

5

4

3

2

1

HOLTEC PROPRIETARY

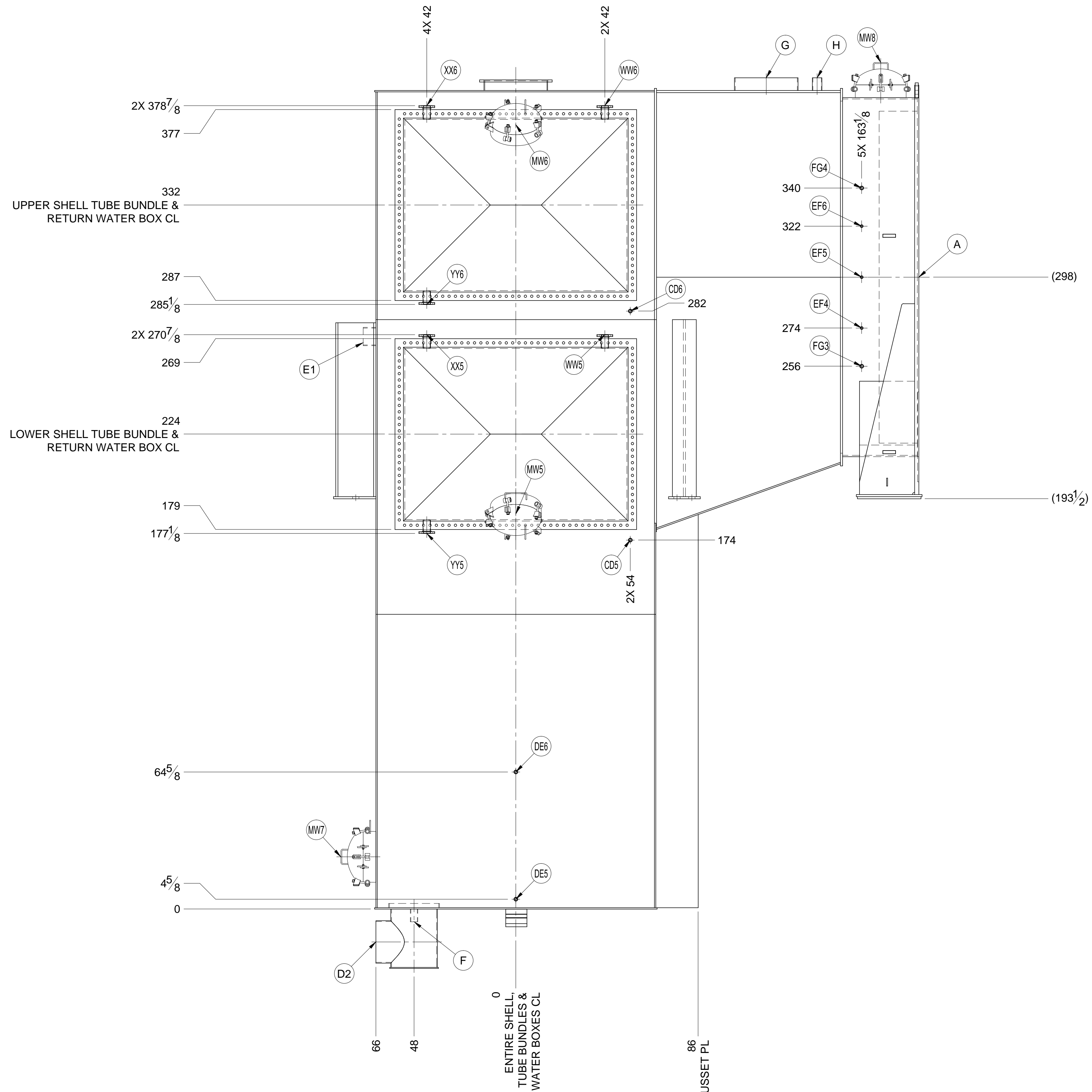
D

C

B

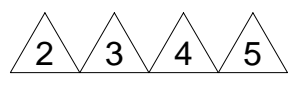
A

HOLTEC PROPRIETARY

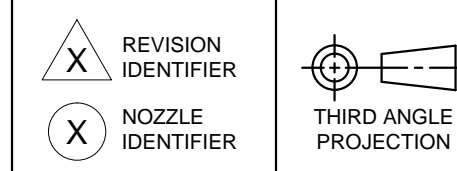


RETURN WATER BOX END ELEVATION

SCALE 1:30
NORTH END (LOOKING SOUTH).



UNLESS OTHERWISE SPECIFIED
ALL DIMENSIONS ARE IN INCHES.
BRACKETED [] DIMENSIONS ARE IN mm.
DO NOT SCALE DRAWING.
INTERPRET DIMENSIONING AND
TOLERANCING PER ASME Y14.5M-1994.
TOLERANCES PER APPLICABLE
H.E.I. STANDARD.



REVISION IDENTIFIER
NOZZLE IDENTIFIER
THIRD ANGLE PROJECTION

THIS DRAWING IS THE INTELLECTUAL PROPERTY OF HOLTEC INTERNATIONAL. IT IS PROVIDED TO THE RECIPIENT UNDER THE EXPLICIT CONDITION THAT IT WILL NOT BE DUPLICATED IN WHOLE OR PART, OR GIVEN TO OTHERS WITHOUT WRITTEN CONSENT OF HOLTEC INTERNATIONAL.

PROJECT / CLIENT		GAINESVILLE RENEWABLE ENERGY CENTER, FAGEN, INC.	
TITLE		GENERAL ARRANGEMENT DRAWING FOR STEAM SURFACE CONDENSER	
ENGINEER		ZACHRY ENGINEERING CORPORATION	
CLIENT JOB NO.	104009	LOCATION GAINESVILLE, FLORIDA	
CLIENT P.O. NO.	554652	SIZE	D
CLIENT DOC. NO.	O-A014200-SPCG481116	PROJECT NO.	2135
		DRAWING NO.	8284
		SHEET	3 OF 8
		REV.	7

FILE PATH: G:\PROJECTS\2135-0-DRAWINGS\GAI\8284_REV 7
PLOTTED July 30, 2012 1:56:56 PM BY TY PETRAKIS

M014200-CNDA0001 503 R7